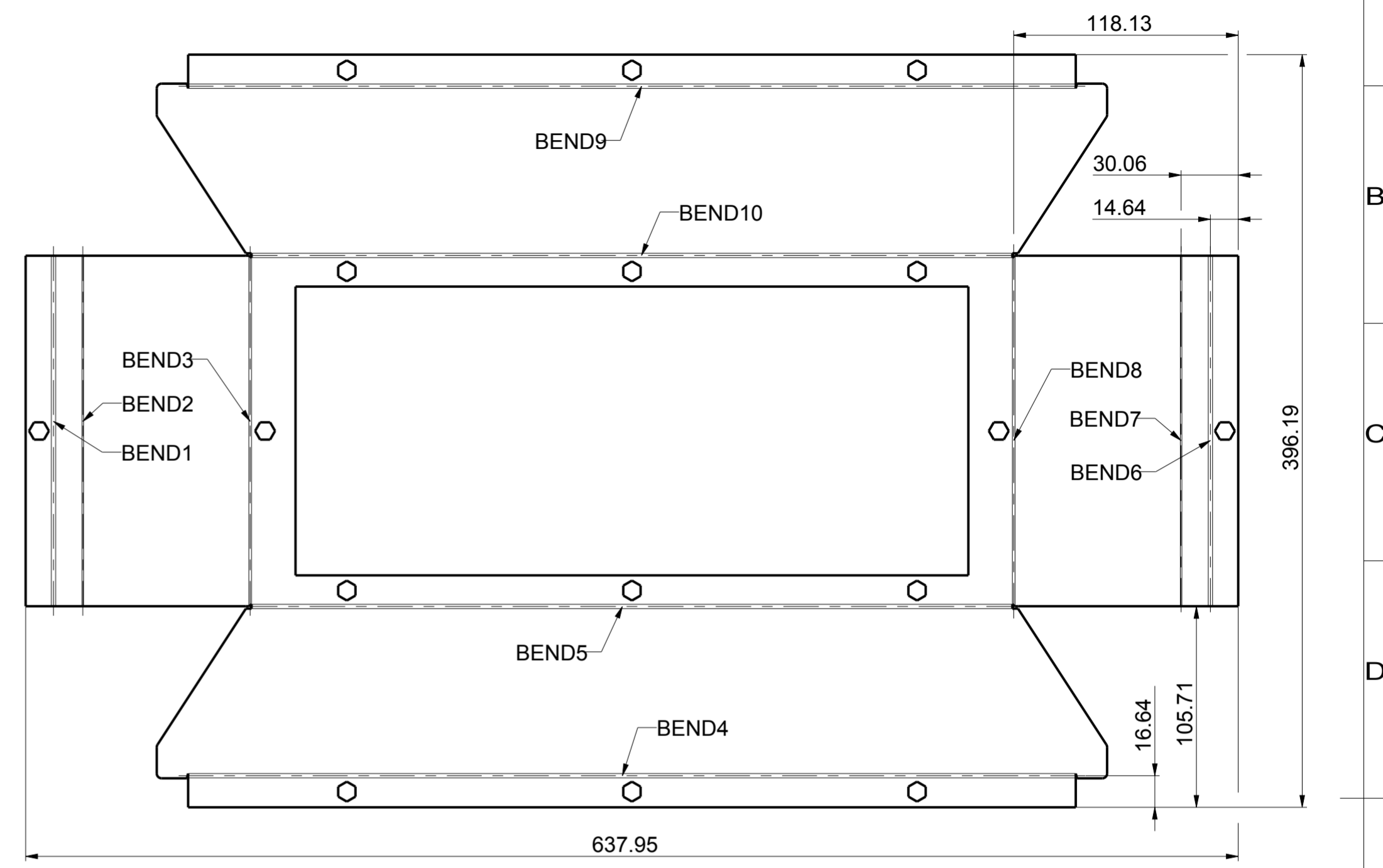
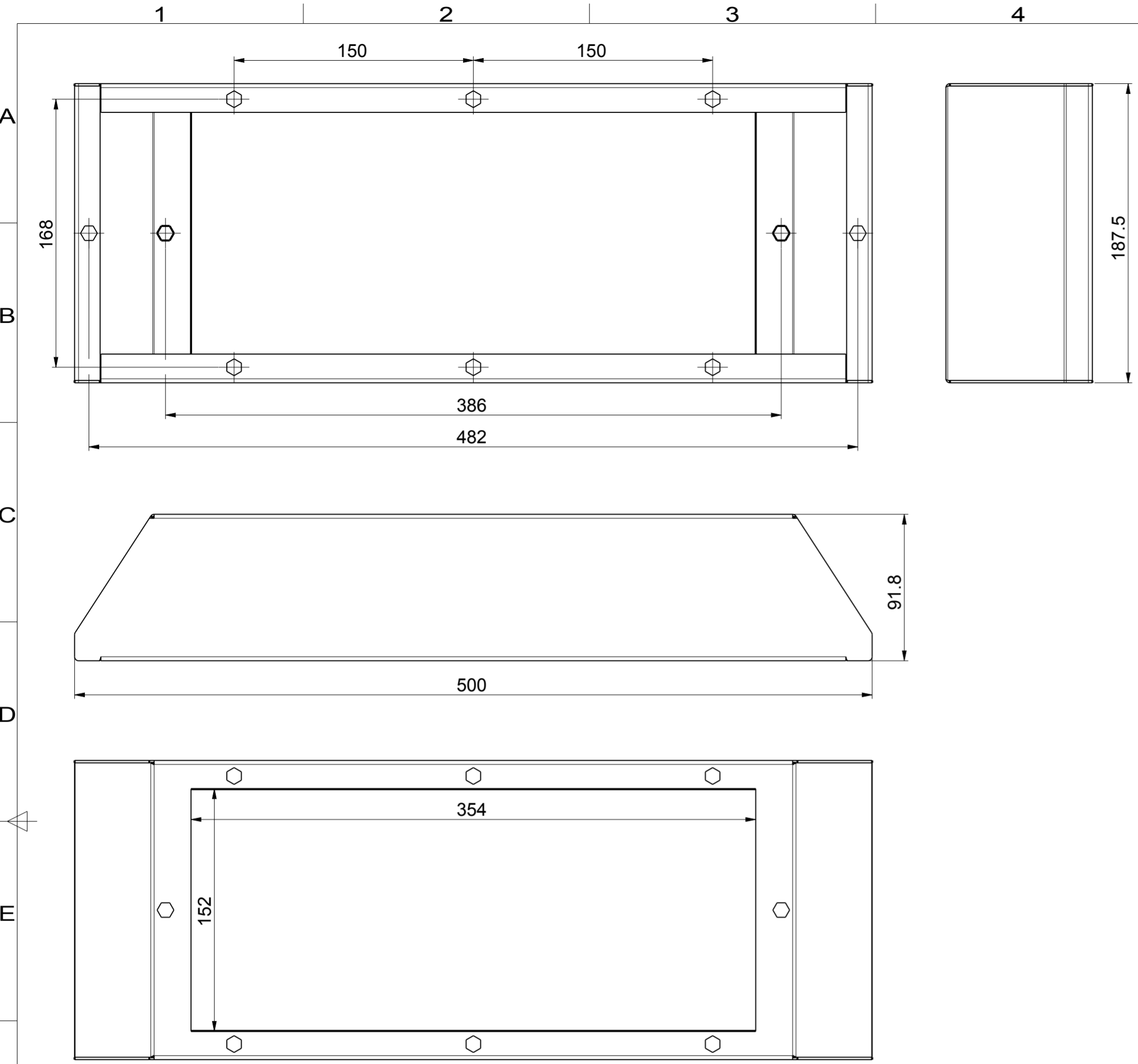


ISS	DESIGNER	DRAWN BY	ISS. DATE
1.2	A.Camilleri	A.Camilleri	21.02.2017
1E: Dim 152 was 150			

OUTER SURFACE FINISH:
GRAIN DIRECTION MUST BE MAINTAINED AFTER FINAL BUFFING
NO VISUAL CROSS-GRAIN AND MARKS ARE ALLOWED.



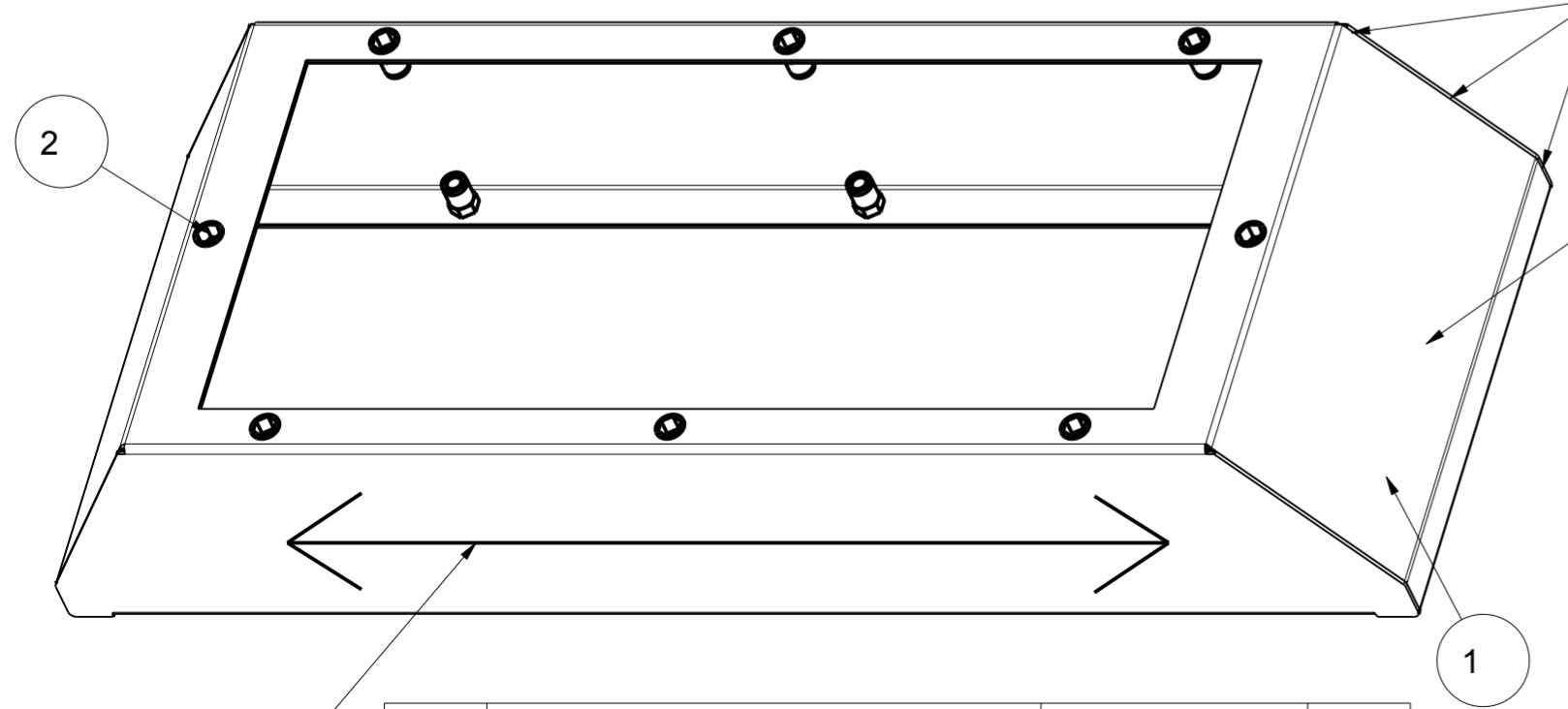
BEND SEQ	#BENDS	BEND#	BEND DIRECTION	BEND ANGLE	BEND RADIUS	BEND LENGTH
1	1	1	OUT	90.000	2.500	2.273
2	1	1	OUT	33.000	2.500	0.818
3	1	1	OUT	57.000	2.500	1.414
4	1	1	OUT	90.000	2.500	2.273
5	1	1	OUT	90.000	2.500	2.273
6	1	1	OUT	90.000	2.500	2.273
7	1	1	OUT	33.000	2.500	0.818
8	1	1	OUT	57.000	2.500	1.414
9	1	1	OUT	90.000	2.500	2.273
10	1	1	OUT	90.000	2.500	2.273

WELD SEAM AND GRIND TO BLEND WITH BEND RADIUS, GRAIN DIRECTION MUST MATCH OTHER SURFACES (ALL 4 CORNERS)

OUTER SURFACE

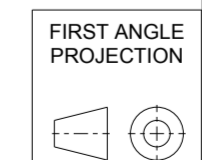
NOTES:

- UNLESS OTHERWISE SPECIFIED, DIMENSIONS ARE IN MM. DIMENSIONS W/O TOLERANCES DIN ISO 2768-mK AS FOLLOWS. SURFACES DIN ISO 1302. TOLERANCES ARE NOT CUMULATIVE.
- THIS IS A PRO/ENGINEER PARAMETRIC DRAWING. ANY CHANGES MUST BE MADE WITHIN PRO/INTRALINK.
- REMOVE ALL BURRS AND SHARP EDGES.



GRAIN DIRECTION

Item	Description	Art.no.	Qty.
1	Duct	M5930019594	1
2	Popnut M6 Hexagon Open A2	510069835	16



19594	DRAWING	1.2	Work In Progress
TG3200_DUCT	PART	1.5	Work In Progress
PRO/E FILENAME	FILE TYPE	REV	RELEASE



Designed by:	A.Camilleri	Date:	02.09.2013
Drawn by:	A.Camilleri	Date:	11.09.2013
Checked by:	-	Approved by:	-
Art.no.:	M5930019594		
Material:	Stainless Steel, 1.5		
	Duct TG-3200		
WE RESERVE ALL COPYRIGHT AND OTHER RIGHTS IN THIS DOCUMENT SEIFERT MTM SYSTEMS (MALTA) LTD.			
19594	SHEET	ISSUE	SCALE
	1 of 1	1.2	0.400
			SIZE
			A2