

# FL-54xx Specifications

43778 0.3 / 1 of 2

Art no:	Voltage (VAC)	Frequency (Hz)	Current (A)		Power (W)		Maximum AirFlow (CFM) ASSEMBLY		Maximum AirFlow (CFM) FAN ONLY		Noise level (dB/A)		Operating temperature (°C) [°F]	Weight (g) [lbs]
			50Hz	60 Hz	50Hz	60 Hz	50Hz	60 Hz	50Hz	60 Hz	50Hz	60 Hz		
FL-5431	115v	50/60Hz	0.55	0.62	56	68	353	312	680	630	66	62	-10 [14] to 70 [158]	3537 [7.8]
FL-5441	230v	50/60Hz	0.26	0.3	56	63	353	312	680	630	66	62	-10 [14] to 70 [158]	3537 [7.8]

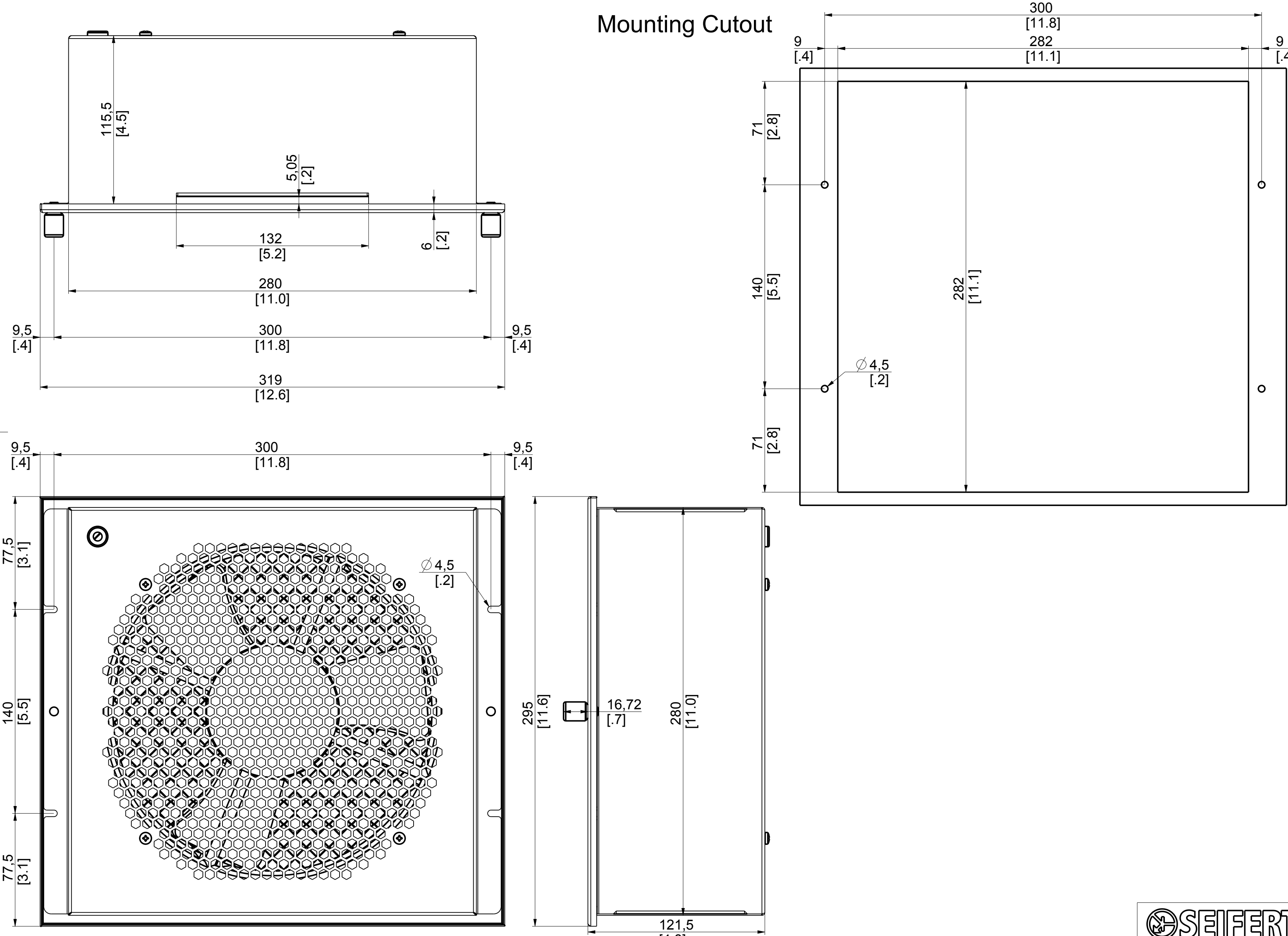
UNLESS OTHERWISE SPECIFIED, DIMENSIONS ARE IN MM. DIMENSIONS W/O TOLERANCES ISO2768-mK AS FOLLOWS. SURFACES ISO1302. TOLERANCES ARE NOT CUMULATIVE.

LINEAR DIMENSIONS							
0.5 to 3	>3 to 6	>6 to 30	>30 to 120	>120 to 400	>400 to 1000	>1000 to 2000	>2000 to 4000
±0.1	±0.1	±0.2	±0.3	±0.5	±0.8	±1.2	±2

ANGULAR DIMENSIONS					BEND DIRECTION	
to 10	>10 to 50	>50 to 120	>120 to 400	>400	↖ ↗	BEND OUT
±1°	±0°30'	±0°20'	±0°10'	±0°5'	↘ ↙	BEND IN

## Mounting Cutout



- NOTES:
- THIS IS A PRO/ENGINEER PARAMETRIC DRAWING. ANY CHANGES MUST BE WITHIN PRO/INTRALINK.
  - REMOVE ALL BURRS AND SHARP EDGES.

REV	BY	DATE	DESCRIPTION
0.3	DS	26.09.17	Modified views
0.2	DS	16.11.16	Removed cutout template from assembly drawing
0.1	DS	16.11.16	Added mounting cutout and created sheet 2

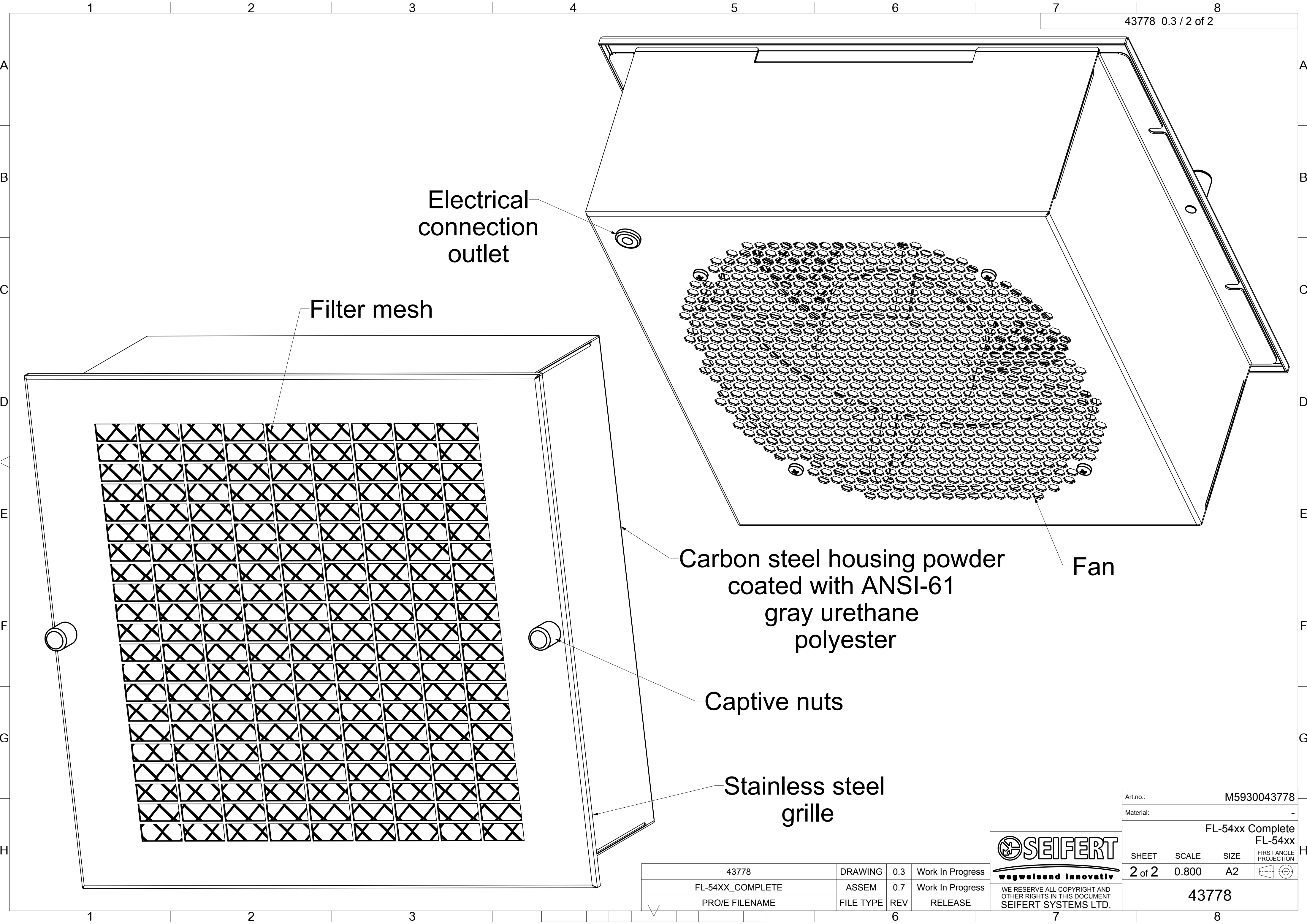
Art.no.: M5930043778  
Material: -

FL-54xx Complete  
FL-54xx

Designed:	D.Schembri	25.10.2016	FIRST ANGLE PROJECTION	SCALE
Drawn:	D.Schembri	02.11.2016	SHEET	1 of 2
Checked:	-	Approved: -	ISSUE	0.510
43778			SIZE	A2



43778	DRAWING	0.3	Work In Progress
FL-54XX_COMPLETE	ASSEM	0.7	Work In Progress
PROE_FILENAME	FILE TYPE	REV	RELEASE



Electrical connection outlet

Filter mesh

Carbon steel housing powder coated with ANSI-61 gray urethane polyester

Fan

Captive nuts

Stainless steel grille

Art.no.:	M5930043778		
Material:	-		
FL-54xx Complete FL-54xx			
SHEET	SCALE	SIZE	FIRST ANGLE PROJECTION
2 of 2	0.800	A2	
43778			

43778	DRAWING	0.3	Work In Progress
FL-54XX_COMPLETE	ASSEM	0.7	Work In Progress
PRO/E FILENAME	FILE TYPE	REV	RELEASE

**SEIFERT**  
wegweisend innovativ

WE RESERVE ALL COPYRIGHT AND OTHER RIGHTS IN THIS DOCUMENT SEIFERT SYSTEMS LTD.