

FL-52xx Specifications

Art no:	Voltage (VAC)	Frequency (Hz)	Current (A)		Power (W)		Maximum AirFlow (CFM) ASSEMBLY		Maximum AirFlow (CFM) FAN ONLY		Noise level (dB/A)		Operating temperature (°C) [°F]	Weight (g) [lbs]
			50Hz	60 Hz	50Hz	60 Hz	50Hz	60 Hz	50Hz	60 Hz	50Hz	60 Hz		
FL-5231	115v	50/60Hz	0.22	0.23	25	27	168	182	203	239	51	58	-10 [14] to 80 [176]	2109 [4.65]
FL-5241	230v	50/60Hz	0.11	0.11	25	26	168	182	203	239	51	58	-10 [14] to 80 [176]	2109 [4.65]

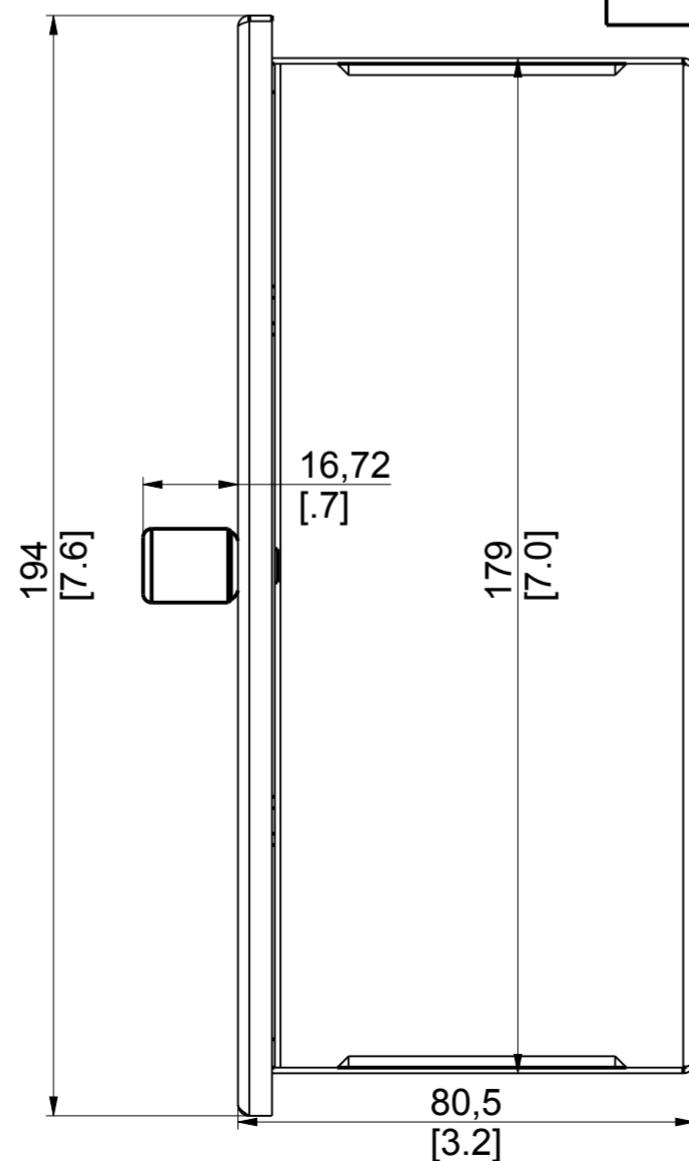
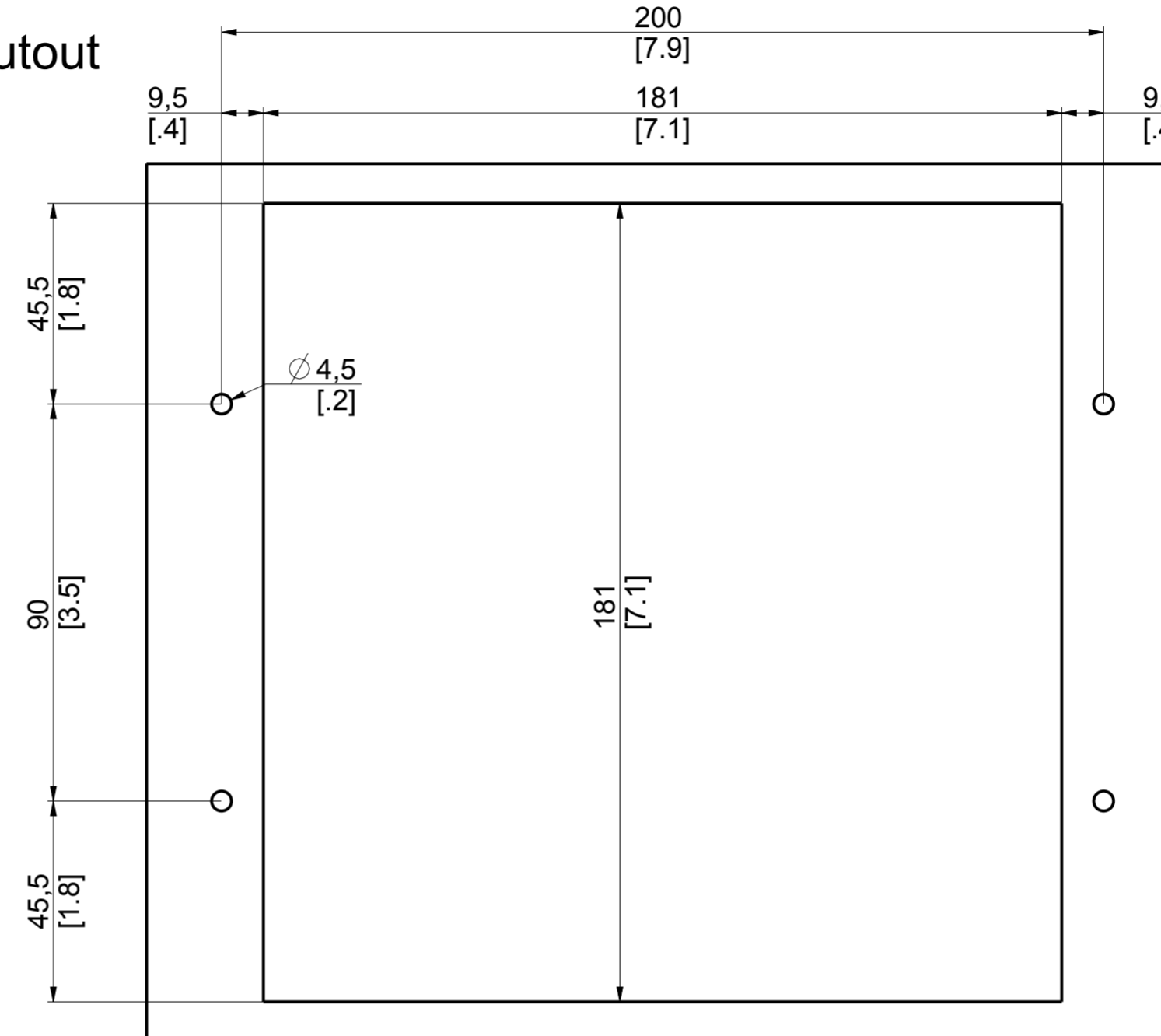
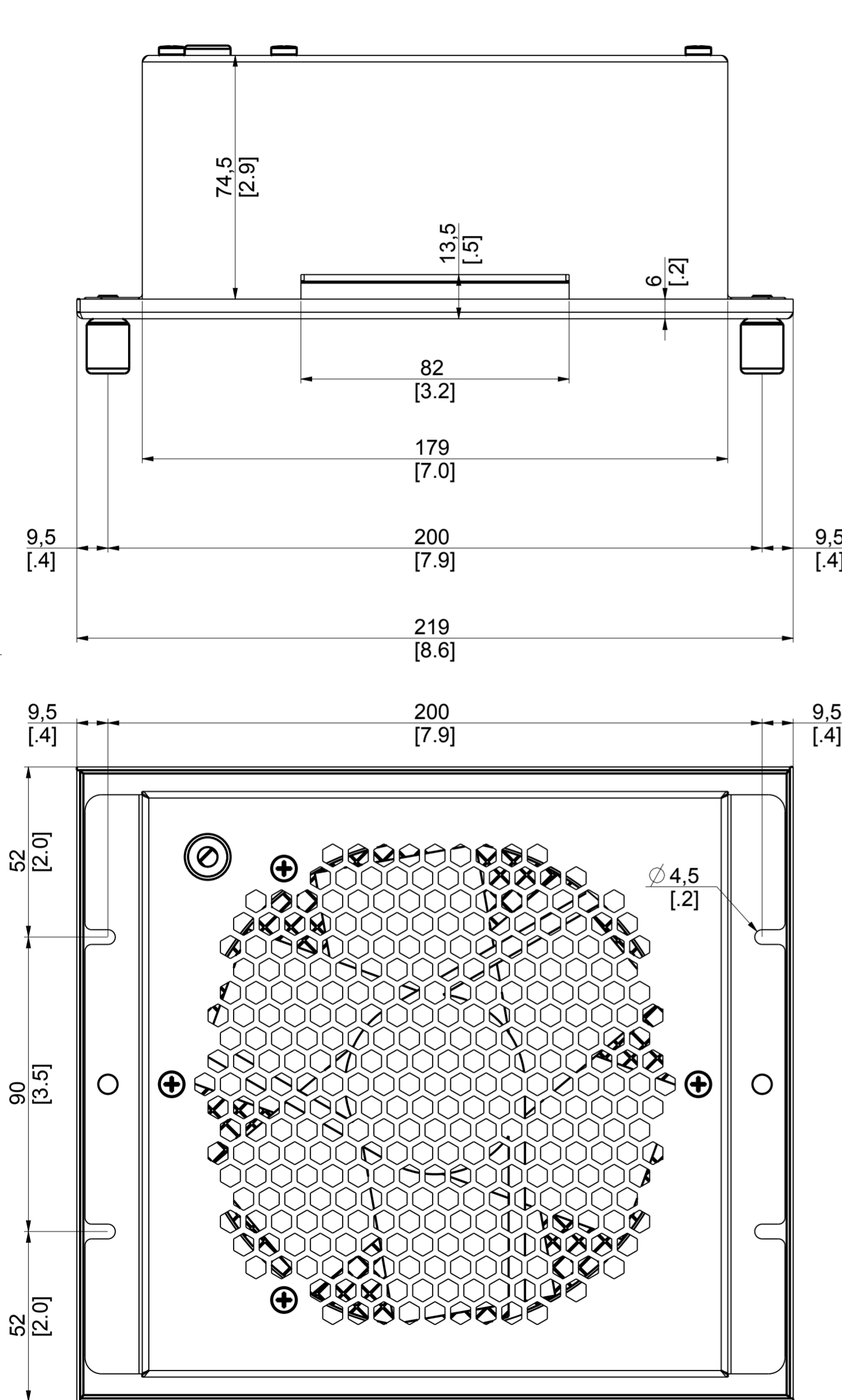
43777 0.3 / 1 of 2

UNLESS OTHERWISE SPECIFIED, DIMENSIONS ARE IN MM. DIMENSIONS W/O TOLERANCES ISO2768-mK AS FOLLOWS. SURFACES ISO1302. TOLERANCES ARE NOT CUMULATIVE.

LINEAR DIMENSIONS							
0.5 to 3	>3 to 6	>6 to 30	>30 to 120	>120 to 400	>400 to 1000	>1000 to 2000	>2000 to 4000
±0.1	±0.1	±0.2	±0.3	±0.5	±0.8	±1.2	±2

ANGULAR DIMENSIONS					BEND DIRECTION	
to 10	>10 to 50	>50 to 120	>120 to 400	>400	↙ ↗	BEND OUT
±1°	±0°30'	±0°20'	±0°10'	±0°5'	↘ ↖	BEND IN

Mounting Cutout



NOTES:
 1. THIS IS A PRO/ENGINEER PARAMETRIC DRAWING. ANY CHANGES MUST BE WITHIN PRO/INTRALINK.
 2. REMOVE ALL BURRS AND SHARP EDGES.

REV	BY	DATE	DESCRIPTION
0.3	DS	26.09.17	Modified views
0.2	DS	16.11.16	Removed cutout template from assembly drawing
0.1	DS	16.11.16	Added mounting cutout and created sheet 2

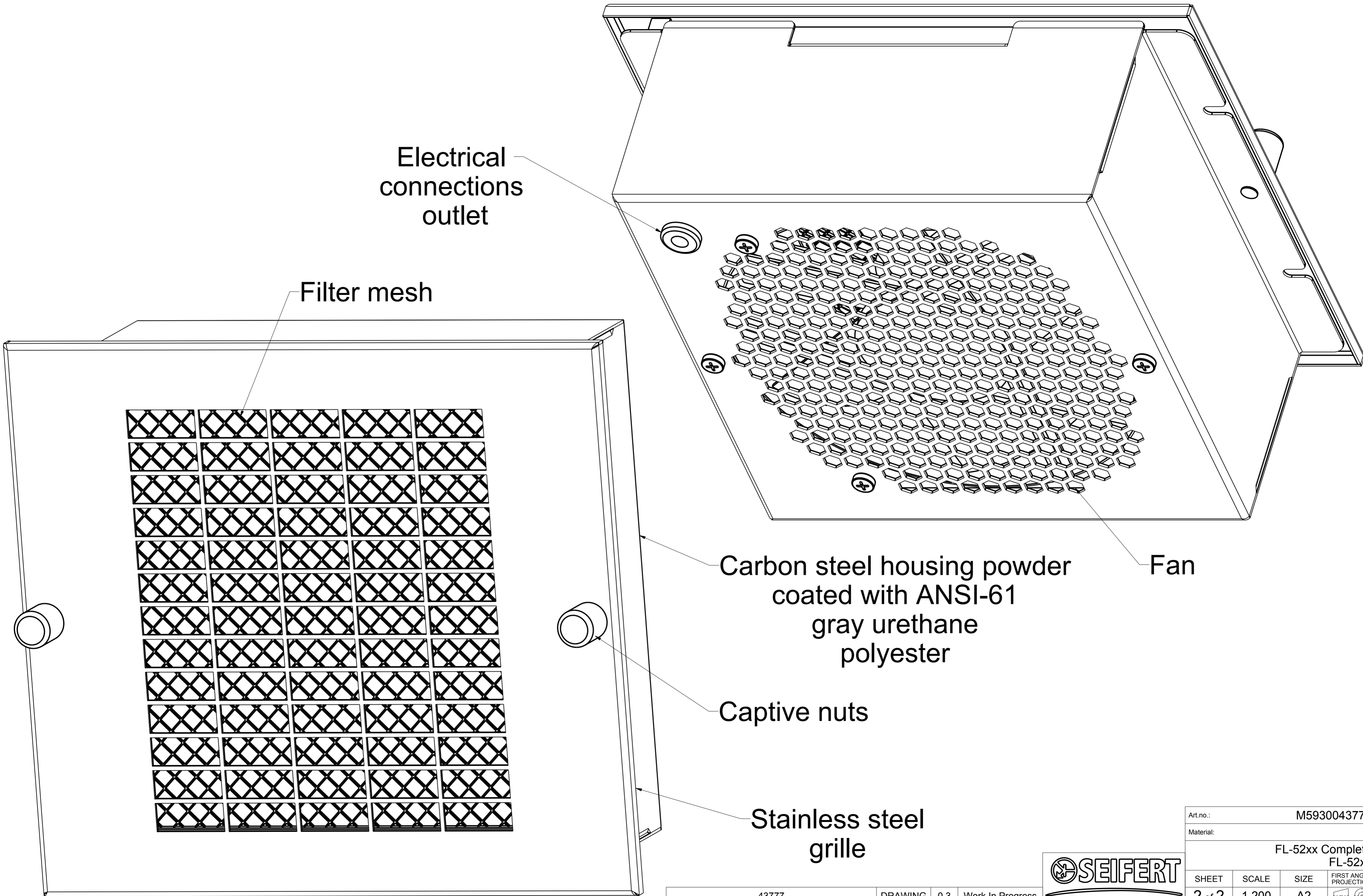
Art.no.: M5930043777
 Material: -

FL-52xx Complete
 FL-52xx

Designed:	D.Schembri	25.10.2016	FIRST ANGLE PROJECTION	SCALE
Drawn:	D.Schembri	02.11.2016	SHEET	1 of 2
Checked:	-	Approved: -	ISSUE	0.750
				SIZE
43777				0.3 A2

43777	DRAWING	0.3	Work In Progress
FL-52XX_COMPLETE	ASSEM	0.6	Work In Progress
PROE_FILENAME	FILE TYPE	REV	RELEASE





Electrical connections outlet

Filter mesh

Carbon steel housing powder coated with ANSI-61 gray urethane polyester

Fan

Captive nuts

Stainless steel grille

43777	DRAWING	0.3	Work In Progress
FL-52XX_COMPLETE	ASSEM	0.6	Work In Progress
PRO/E FILENAME	FILE TYPE	REV	RELEASE



Art.no.: M5930043777			
Material: -			
FL-52xx Complete FL-52xx			
SHEET	SCALE	SIZE	FIRST ANGLE PROJECTION
2 of 2	1.200	A2	
43777			