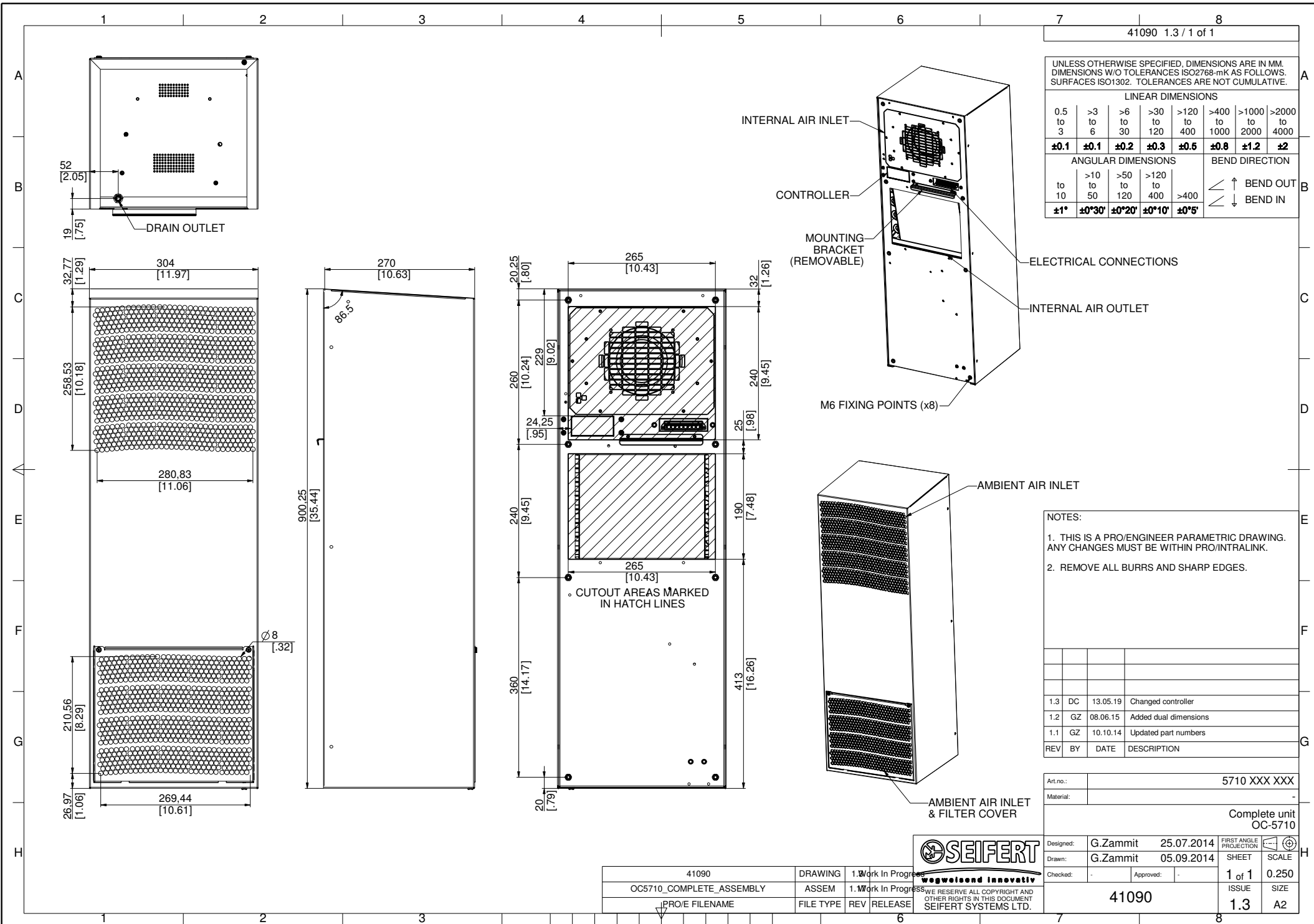


NAME: DANIEL C OBJECT: 41090 DATE: 13-May-19 12:54:53



41090 1.3 / 1 of 1

UNLESS OTHERWISE SPECIFIED, DIMENSIONS ARE IN MM. DIMENSIONS W/O TOLERANCES ISO2768-mK AS FOLLOWS. SURFACES ISO1302. TOLERANCES ARE NOT CUMULATIVE.

LINEAR DIMENSIONS						
0.5 to 3	>3 to 6	>6 to 30	>30 to 120	>120 to 400	>400 to 1000	>1000 to >2000
± 0.1	± 0.1	± 0.2	± 0.3	± 0.5	± 0.8	± 1.2 ± 2
ANGULAR DIMENSIONS					BEND DIRECTION	
to 10	>10 to 50	>50 to 120	>120 to 400	>400		
$\pm 1^\circ$	$\pm 0^\circ 30'$	$\pm 0^\circ 20'$	$\pm 0^\circ 10'$	$\pm 0^\circ 5'$		

NOTES:
 1. THIS IS A PRO/ENGINEER PARAMETRIC DRAWING. ANY CHANGES MUST BE WITHIN PRO/INTRALINK.
 2. REMOVE ALL BURRS AND SHARP EDGES.

REV	BY	DATE	DESCRIPTION
1.3	DC	13.05.19	Changed controller
1.2	GZ	08.06.15	Added dual dimensions
1.1	GZ	10.10.14	Updated part numbers

Art.no.:	5710 XXX XXX		
Material:	-		
Complete unit OC-5710			
Designed:	G.Zammit	25.07.2014	FIRST ANGLE PROJECTION
Drawn:	G.Zammit	05.09.2014	SHEET SCALE
Checked:	-	Approved: -	1 of 1 0.250
41090			ISSUE SIZE
			1.3 A2

41090	DRAWING	1. Work In Progress
OC5710_COMPLETE_ASSEMBLY	ASSEM	1. Work In Progress
PRO/E FILENAME	FILE TYPE	REV RELEASE



WE RESERVE ALL COPYRIGHT AND OTHER RIGHTS IN THIS DOCUMENT SEIFERT SYSTEMS LTD.