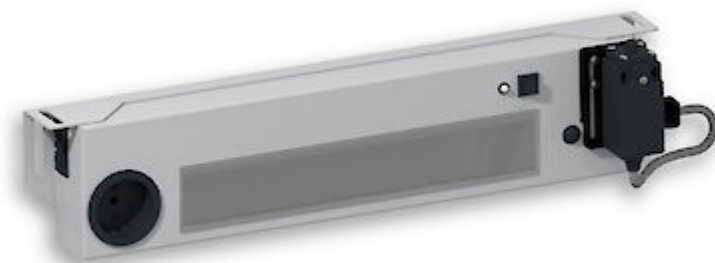


Motion sensor operated enclosure LED lamp



Description

Order Number:	490504612
Colour:	RAL 9003
Housing Material:	Mild steel, powder coated
Ingress Protection:	IP 20
Included:	Motion sensor Schuko outlet (max. 16 A) Door contact ready Daisy Chain max. 10
Note:	Door Switch has to be ordered separately part no. 490505
Approvals:	CE

Accessories:



Power cable AC black, 0.7 m



Power cable AC orange, 0.7 m



Power cable AC black, 3 m



Power cable AC orange, 3 m



Daisy Chain cable AC black, 0.7 m



Daisy Chain cable AC orange, 0.7 m



Daisy Chain cable AC black, 1.2 m



Daisy Chain cable AC orange, 1.2 m



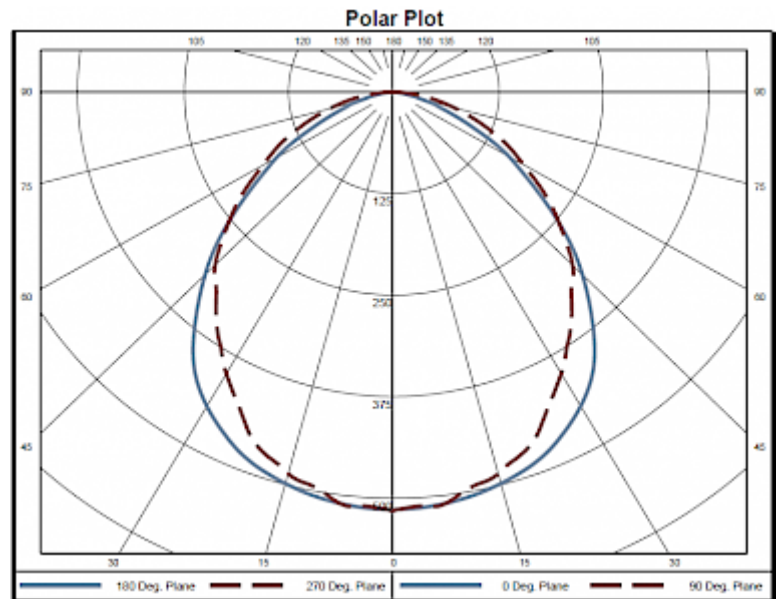
Door contact switch

Technical Data

Operating Temperature Range:	-30°C - 50°C
Mounting:	M5 screws (x2)
Dimensions A x B x C (D+E):	420 x 90 x 45 mm
Weight:	2 kg
Voltage / Frequency:	230 V ~ 50/60 Hz
Rated current:	16.8 A
Power consumption:	16 W
Lamp:	EB-7801
Luminosity:	1500 lm / 5100 K
Lifetime:	60,000 hrs. @ 20°C
Connection:	Recommended external backup fuse: 17 A (T) or circuit breaker C16

Please click on the graphics to download.
 More CAD drawings can be found under [Product Download](#).
 > [Overview Product Group STRIPLITE - LED Enclosure Lights](#)

Performance graph:



[click image to enlarge](#)

Order Information

Taric code

94054099