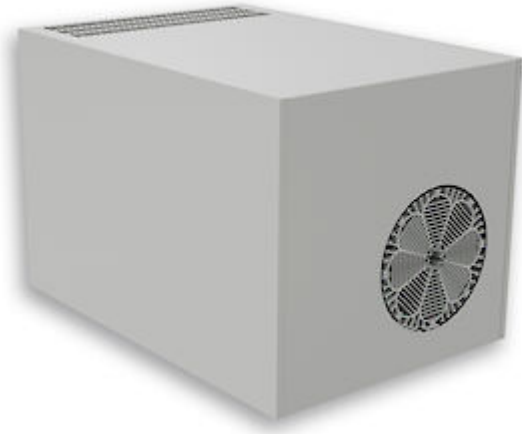


## Roof mounted cooling unit



## Description

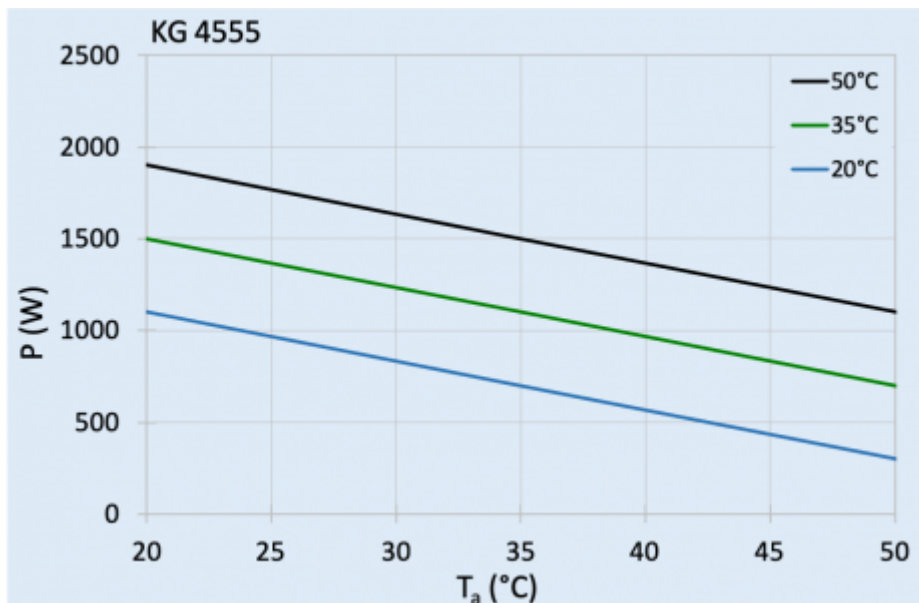
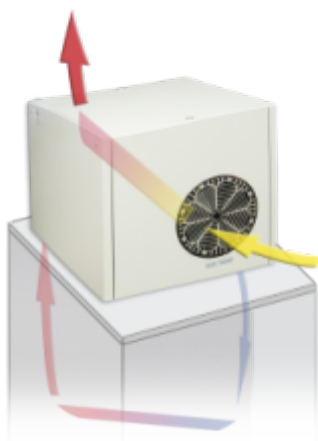
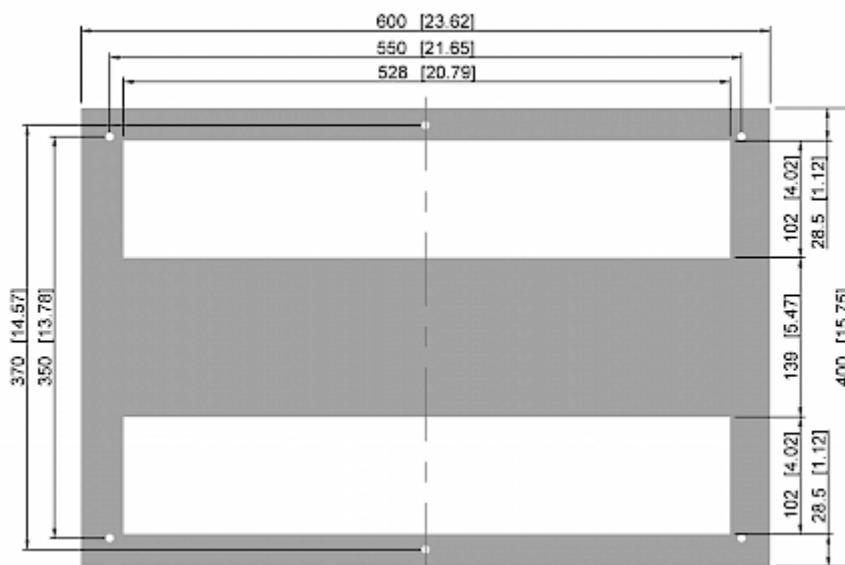
<b>Order Number:</b>	45550001
<b>Brand Name:</b>	SLIMLINE TOP
<b>Colour:</b>	RAL 7035
<b>Housing Material:</b>	Mild steel, powder coated
<b>Ingress Protection:</b>	IP 54
<b>Approvals:</b>	CE, cURus

## Technical Data

<b>Cooling capacity L35L35 (EN14511-3):</b>	1.10 kW @ 50 Hz 1.15 kW @ 60 Hz
<b>Cooling capacity L35L50 (EN14511-3):</b>	700 W @ 50 Hz 750 W @ 60 Hz
<b>Compressor type:</b>	Rotary piston compressor
<b>Refrigerant / GWP:</b>	R 134a / 1430
<b>Refrigerant charge:</b>	500 g / 17.6 oz
<b>High / low Pressure:</b>	35 / 6 bar 508 / 88 psig
<b>Operating Temperature Range:</b>	10°C - 55°C
<b>Air flow volume (system / unimpeded):</b>	Ambient air circuit: 360 / 1200 m <sup>3</sup> /h Cabinet air circuit: 500 / 650 m <sup>3</sup> /h
<b>Mounting:</b>	Roof mounted
<b>Dimensions A x B x C (D+E):</b>	400 x 400 x 600 mm
<b>Weight:</b>	55 kg
<b>Cut out dimensions:</b>	108 x 530 mm (x2)
<b>Voltage / Frequency:</b>	230 V ~ 50/60 Hz
<b>UL Voltage / Frequency:</b>	230/240V ~ 50/60Hz
<b>Current L35L35:</b>	4.0 A @ 50 Hz 4.4 A @ 60 Hz
<b>Starting current:</b>	15 A
<b>Max. current:</b>	4.8 A
<b>Nominal power L35L35:</b>	800 W @ 50 Hz 900 W @ 60 Hz
<b>Max. power:</b>	1.09 kW
<b>Fuse:</b>	10 A (T)
<b>Short-circuit current rating:</b>	5 kA
<b>Connection:</b>	Connection terminal block

Please click on the graphics to download.  
More CAD drawings can be found under [Product Download](#).

> [Overview Product Group SLIMLINE PRO TOP - roof mounted cooling units](#)

**Performance graph:**

[click image to enlarge](#)
**Air flow:**

[click image to enlarge](#)
**Cut Out Dimension:**

[click image to enlarge](#)

## Order Information

<b>Stainless steel housing part no.</b>	4555002
<b>Taric code</b>	84158200
<b>GTIN (EAN)</b>	5350604330085