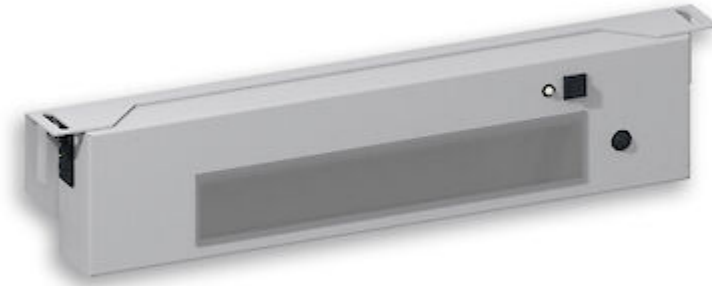






Sensor operated LED lamp. Only for installation inside industrial control cabinets.



Description

Order Number:	490561612
Colour:	RAL 9003
Housing Material:	Mild steel, powder coated
IP protection class to EN 60 529:	IP 20
Included:	Motion sensor Daisy Chain max. 10
SK notes:	Suitable for damp locations
Approvals:	CE, cURus
UL File Number:	E358386
Accessories:	
	Power cable DC black, 0.7 m
	Power cable DC black, 3 m
	Daisy Chain cable DC black, 0.7 m
	Daisy Chain cable AC black, 1.2 m

Technical Data

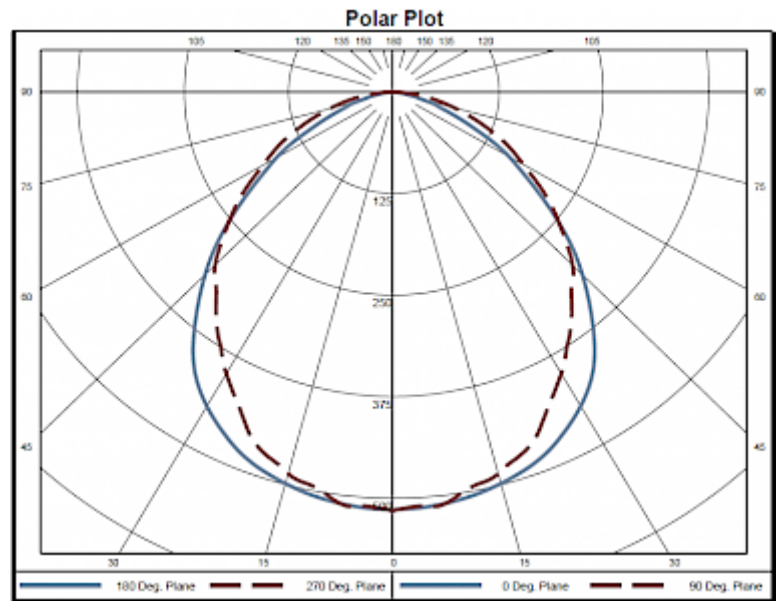
Operating Temperature Range:	-30°C - 50°C
Mounting:	M5 screws (x2)
Dimensions A x B x C (D+E):	420 x 90 x 45 mm
Weight:	2 kg
Voltage / Frequency:	24 V DC
Voltage tolerance:	Only use SELV-DC power sources
Rated current:	5 A
Power consumption:	12 W
Lamp:	EB-7801
Luminosity:	1500 lm / 5100 K
Lifetime:	60,000 hrs. @ 20°C
Connection:	Recommended external backup fuse: 7 A (T)

Please click on the graphics to download.

More CAD drawings can be found under [Product Download](#).

> [Overview Product Group Energy-saving LED enclosure Lamps](#)

Performance graph:



[click image to enlarge](#)

Order Information

Taric code

94054990